

WAFER VALVES

“WAFER” WBV AND WBV-CMAP SERIES

FEATURES

Features of the butterfly valve:

- Valve body: cast iron
- Valve seat: cast iron
- Seat disc: AISI 304 or AISI 316
- Butterfly valve stem: AISI 304 or AISI 316
- Max. operating pressure: 210 mbar
- Max. fluid temperature with device: AISI 304 450°C
- Max. fluid temperature with device: AISI 316 600°C
- Leakage: $\pm 2\%$

Features of the electric control MOD. ECON-O:

- Voltage: 24/115/230+10%-15% 50/60Hz
- Proportional control signal on request: 0÷10V, 4÷20 mA
(only for ECON-O 24V model)
- Power consumption: 4VA
- No. 2 auxiliary micro switches: 5A/250Vac
- Electrical protection: IP54
- Connections: No. 2 cable entries PG13.5
- Angle of rotation: 90°
- 90° rotation time: 7 to 120 s (aver. 60 s)
- Maximum operating temperature: -10°C to +60°C
- Rated torques available: 4Nm, 7Nm, 15Nm, 20Nm (aver. 20Nm)
- Housing: die cast aluminium
- Drive shaft: 9.5 mm
- Potentiometers available: 150 Ohm, 1000 Ohm, 2500 Ohm
(standard No. 1 1000 Ohm)
- Mass: 2.5 kg
- Operating position: any



F135101



F135102

DESCRIPTION

The BV-CMAP series is a range of modulating butterfly valves, specifically designed for the control of low pressure air supplies. Both manual and electrical operation is available. The internal plate position is indicated by a pointer on the valve crank arm. This can be set by using two mechanical limit stops. The outlet pressure can be checked at the 1/8" BSP test point.

Note: The limit switches of the Modulating Motors are supplied

factory set. It is advisable to check these limits during plant commissioning and reset if necessary.

APPLICATIONS

- Air adjuster in industrial processes.
- Flow shutter.
- Available for DN10 PN10 to DN400 PN10 conduits.



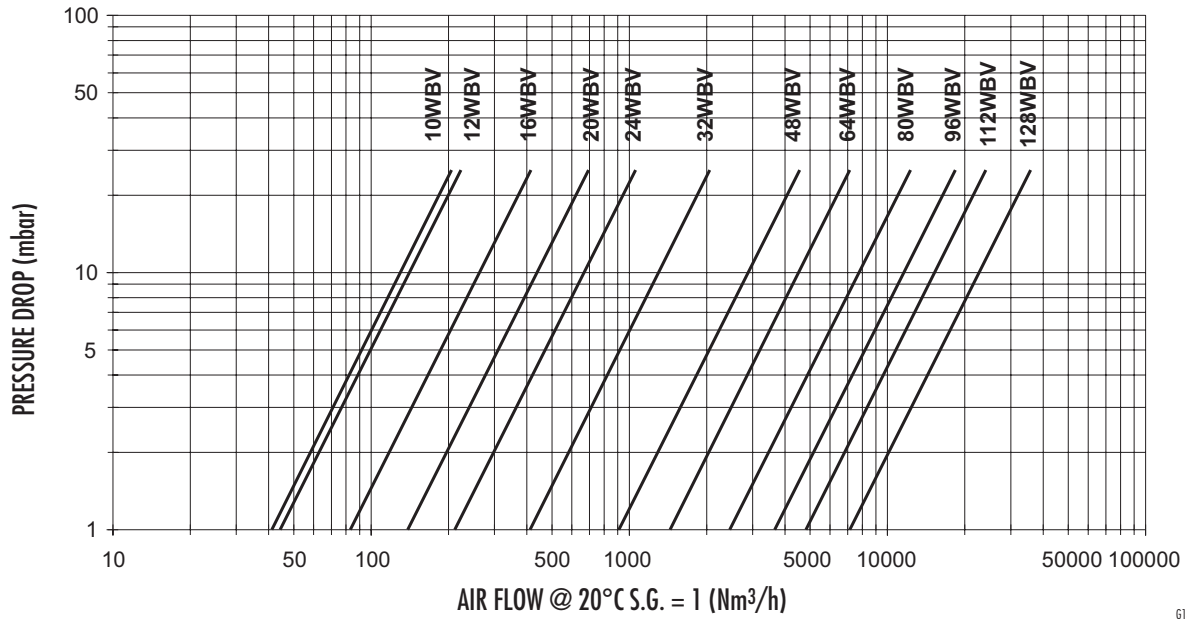
Headquarters
Esa S.r.l.
Via E. Fermi 40 I-24035 Curno (BG) - Italy
Tel. +39.035.6227411 - Fax +39.035.6227499
esa@esacombustion.it - www.esapyronics.com

International Sales
Pyronics International S.A./N.V.
Zoning Ind., 4ème rue B-6040 Jumet - Belgium
Tel +32.71.256970 - Fax +32.71.256979
marketing@pyronics.be

INSTALLATION

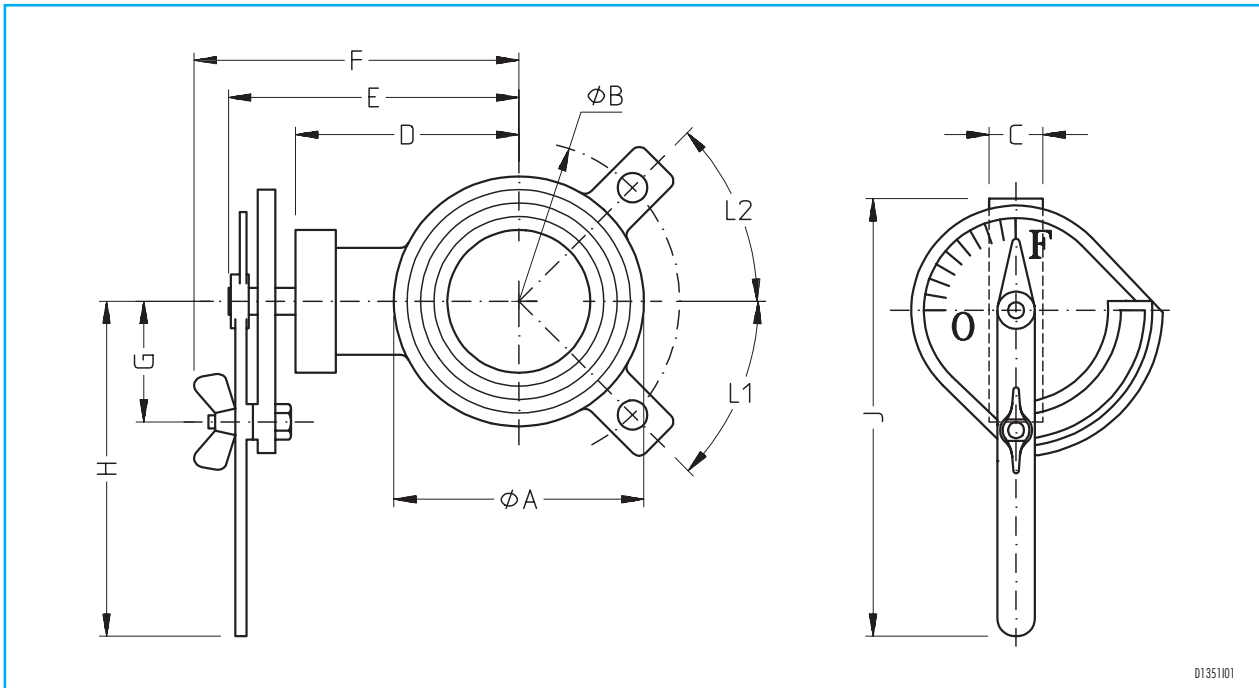
- Butterfly valve may be mounted in any plane (Note: Adhere to Mod. Motor manufactures operating instructions on electrical versions).
- It is recommended that the butterfly valve is mounted down stream of any measuring device.
- If the valve is electrically controlled respect the maximum pressure limits.
- Flanged design makes installation easier.
- Robust design ensures extended operation in extreme conditions.

CAPACITY TABLE



61351101

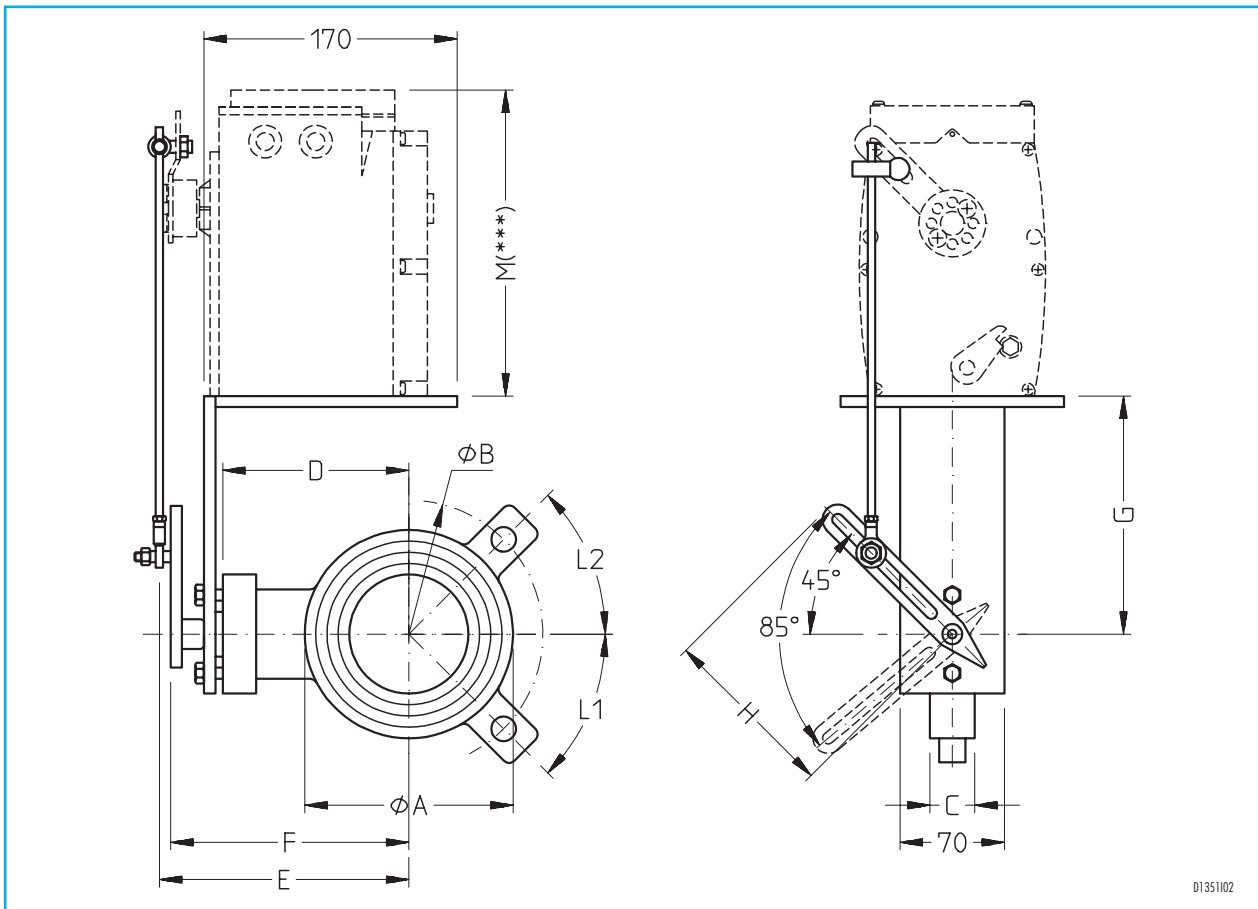
DIMENSIONS



D1351/01

| Catalog no. | Pipe size | DN | A dia. | B dia. | C mm | D mm | E mm | F mm | G mm | H mm | L1 deg. | L2 deg. | J | Mass kg |
|-------------|-----------|-----|--------|--------|------|------|------|------|------|------|---------|---------|-----|---------|
| 10 WBV | 1.1/4" | 32 | 60 | 100 | 25 | 65 | 90 | 110 | 51 | 130 | 45 | 45 | 180 | 1.2 |
| 12 WBV | 1.1/2" | 40 | 90 | 110 | 25 | 90 | 115 | 135 | 51 | 130 | 45 | 45 | 180 | 1.3 |
| 16 WBV | 2" | 50 | 90 | 125 | 25 | 90 | 120 | 140 | 51 | 130 | 45 | 45 | 180 | 1.5 |
| 20 WBV | 2.1/2" | 65 | 120 | 145 | 25 | 90 | 135 | 160 | 51 | 130 | 45 | 45 | 180 | 2.0 |
| 24 WBV | 3" | 80 | 120 | 160 | 25 | 115 | 145 | 165 | 51 | 130 | 45 | 45 | 180 | 3.0 |
| 32 WBV | 4" | 100 | 140 | 180 | 30 | 125 | 172 | 185 | 67 | 187 | 45 | 45 | 250 | 3.7 |
| 40 WBV | 5" | 125 | 165 | 210 | 33 | 150 | 185 | 210 | 67 | 187 | 67.5 | 112.5 | 250 | 4.6 |
| 48 WBV | 6" | 150 | 195 | 240 | 33 | 145 | 180 | 205 | 57 | 187 | 67.5 | 112.5 | 250 | 4.9 |
| 56 WBV | 7" | 175 | 220 | 270 | 33 | 158 | 195 | 210 | 67 | 187 | 67.5 | 112.5 | 250 | 4.9 |
| 64 WBV | 8" | 200 | 250 | 295 | 40 | 180 | 215 | 240 | 67 | 187 | 67.5 | 112.5 | 250 | 8.1 |
| 80 WBV | 10" | 250 | 300 | 350 | 45 | 205 | 240 | 260 | 67 | 187 | 75 | 105 | 250 | 11.4 |
| 96 WBV | 12" | 300 | 360 | 400 | 47 | 240 | 280 | 295 | 67 | 187 | 75 | 105 | 250 | 12.0 |
| 112 WBV | 14" | 350 | 410 | 460 | 55 | 265 | 310 | 320 | 90 | 300 | 105 | 75 | 380 | — |
| 128 WBV | 16" | 400 | 460 | 515 | 55 | 295 | 335 | 350 | 90 | 300 | 101.25 | 78.75 | 380 | — |

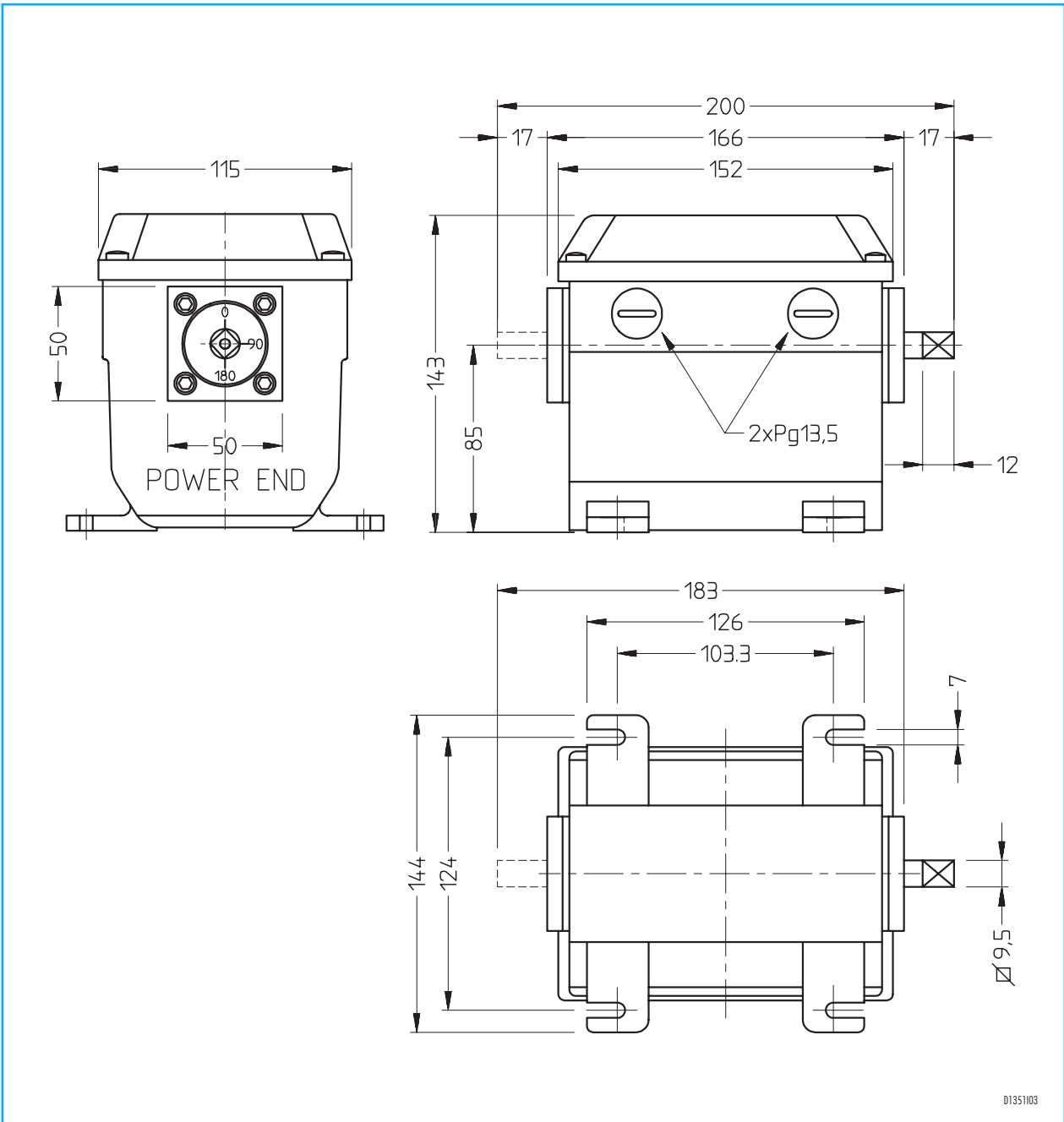
DIMENSIONS



| Catalog no. | Pipe size | DN | A dia. | B dia. | C mm | D mm | E mm | F mm | G mm | H mm | L1 deg. | L2 deg. | J mm | Mass kg |
|--------------|-----------|-----|--------|--------|------|------|------|------|------|------|---------|---------|------|---------|
| 16 WBV-CMAP | 2" | 50 | 90 | 125 | 25 | 90 | 120 | 135 | 150 | 130 | 45 | 45 | 180 | 4.5 |
| 20 WBV-CMAP | 2.1/2" | 60 | 120 | 145 | 25 | 105 | 135 | 160 | 150 | 130 | 45 | 45 | 180 | 5.0 |
| 24 WBV-CMAP | 3" | 80 | 120 | 160 | 25 | 105 | 135 | 160 | 150 | 130 | 45 | 45 | 180 | 6.0 |
| 32 WBV-CMAP | 4" | 100 | 140 | 180 | 30 | 125 | 160 | 175 | 260 | 187 | 45 | 45 | 250 | 7.2 |
| 40 WBV-CMAP | 5" | 125 | 165 | 210 | 33 | 150 | 185 | 200 | 260 | 187 | 67.5 | 12.5 | 250 | 8.1 |
| 48 WBV-CMAP | 6" | 150 | 195 | 240 | 33 | 145 | 180 | 195 | 260 | 187 | 67.5 | 12.5 | 250 | 8.4 |
| 56 WBV-CMAP | 7" | 175 | 220 | 270 | 33 | 158 | 195 | 210 | 260 | 187 | 67.5 | 12.5 | 250 | 8.4 |
| 64 WBV-CMAP | 8" | 200 | 250 | 295 | 40 | 180 | 225 | 240 | 260 | 187 | 67.5 | 12.5 | 250 | 11.6 |
| 80 WBV-CMAP | 10" | 250 | 300 | 350 | 45 | 205 | 245 | 260 | 260 | 187 | 75 | 105 | 250 | 14.9 |
| 96 WBV-CMAP | 12" | 300 | 360 | 400 | 47 | 240 | 275 | 295 | 260 | 187 | 75 | 102 | 250 | 15.0 |
| 112 WBV-CMAP | 14" | 350 | 410 | 460 | 55 | 265 | 300 | 320 | 260 | 300 | 105 | 75 | 380 | — |
| 128 WBV-CMAP | 16" | 400 | 460 | 515 | 55 | 295 | 335 | 350 | 260 | 300 | 101.25 | 78.75 | 380 | — |

M*** = Or dependant on servocontrol dimensions

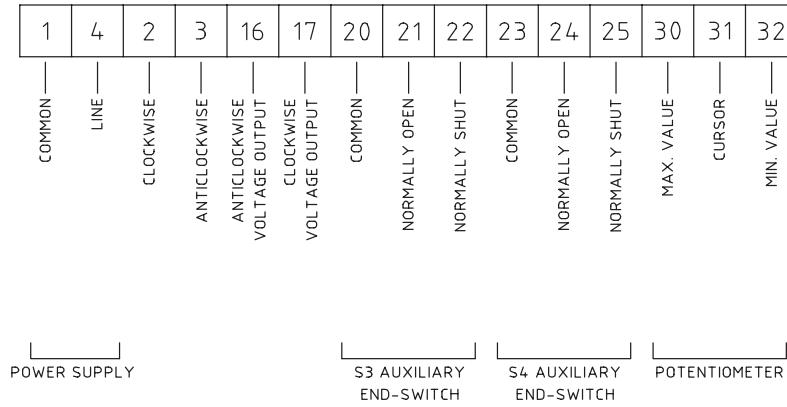
DIMENSIONS (ECON-O)



ELECTRICAL CONNECTIONS

ECON-O AR MODEL

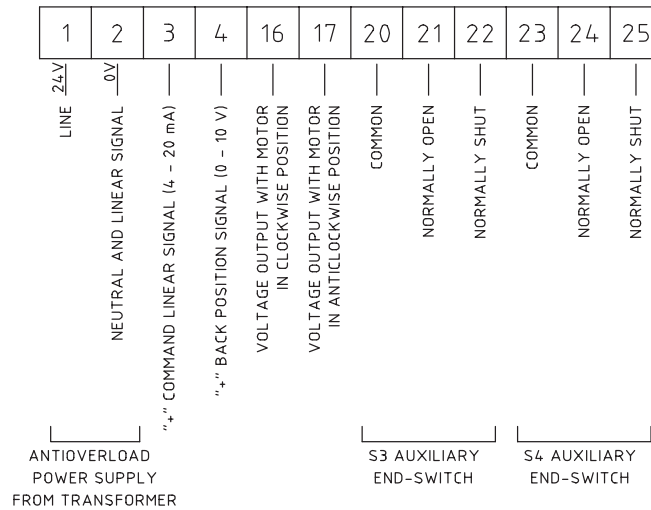
TERMINAL BOARD



D1351104

ECON-O AR MODEL

4:20 mA TERMINAL BOARD



D1351107