

SOLENOID OPERATED BUTTERFLY VALVES

WBV-2S SERIES

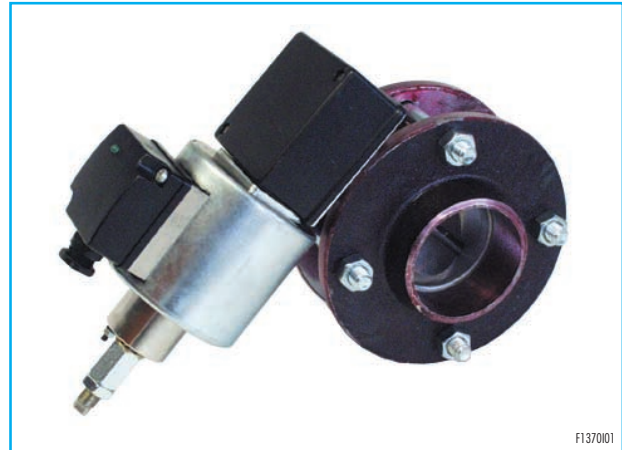
FEATURES

Features of the butterfly valve:

- Valve body: aluminum
- Seat disc: AISI304
- Butterfly valve stem: AISI304
- Available models: DN40 PN10, DN50 PN10, DN65 PN10
- Max. operating pressure: 400 mbar
- Max. fluid temperature: 60 °C
- Leakage: 2-3%

Features of the solenoid:

- Voltage: 115/230V \pm 10% 50/60Hz
- Duty cycle ED: 100% ED
- Live pilot led: green
- Opening time: 1÷3 s
- Closing time: 1÷3 s
- Power consumption: 45 VA
- Cycles: 120/h
- Protections: IP54
- Cable-gland: M16 X 1.5
- Mass: 6 kg
- Housing solenoid: polycarbonate
- Operating position: with horizontal solenoid



F1370101



F1370102

APPLICATIONS

- Min/max control of cold air to industrial installation. Min. and max flow rates may be adjusted separately.

DESCRIPTION

Model WBV-2S series are butterfly "WAFER" valves, designed to control two-stage air flow in low pressure pipelines. Flow regulation is possible by turning screws on solenoid. De-energized solenoid correspond to first stage of the burner; energized solenoid (opened valve) correspond to second stage. A green pilot led lights when solenoid is live.

INSTALLATION

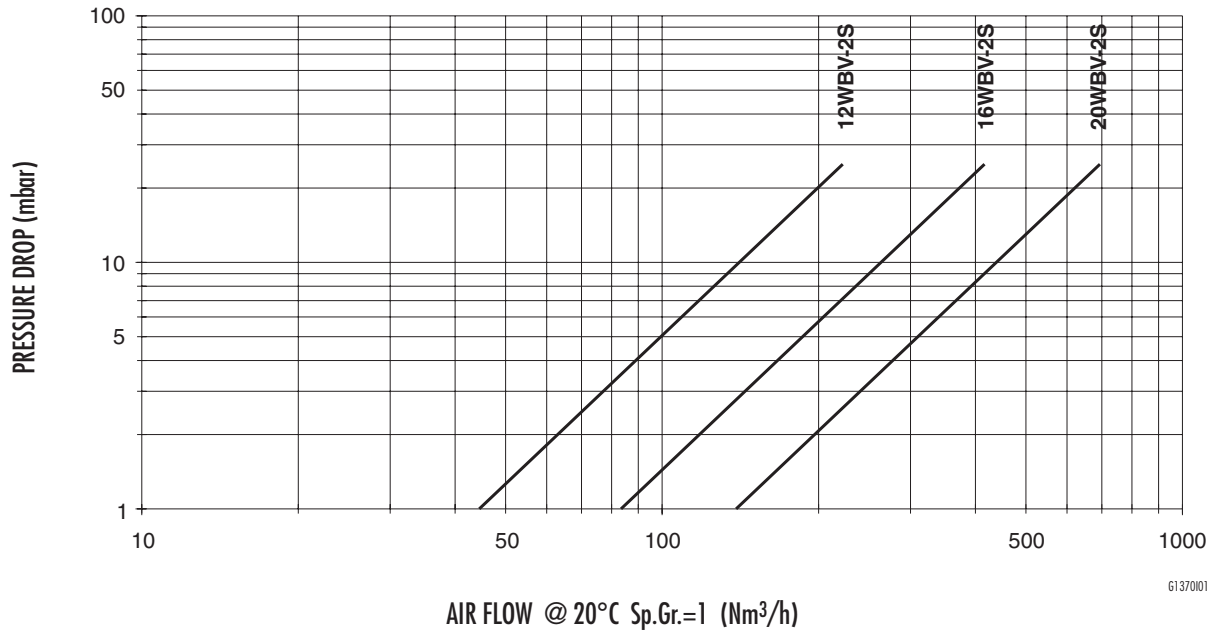
- Butterfly valve may be mounted with the solenoid horizontal.
- It is recommended that the butterfly valve is mounted down stream of any measuring device.
- Flanged design makes installation easier.
- Robust design ensures extended operation in extreme conditions.
- During set-up, place solenoid so that live pilot led is visible by final operator.



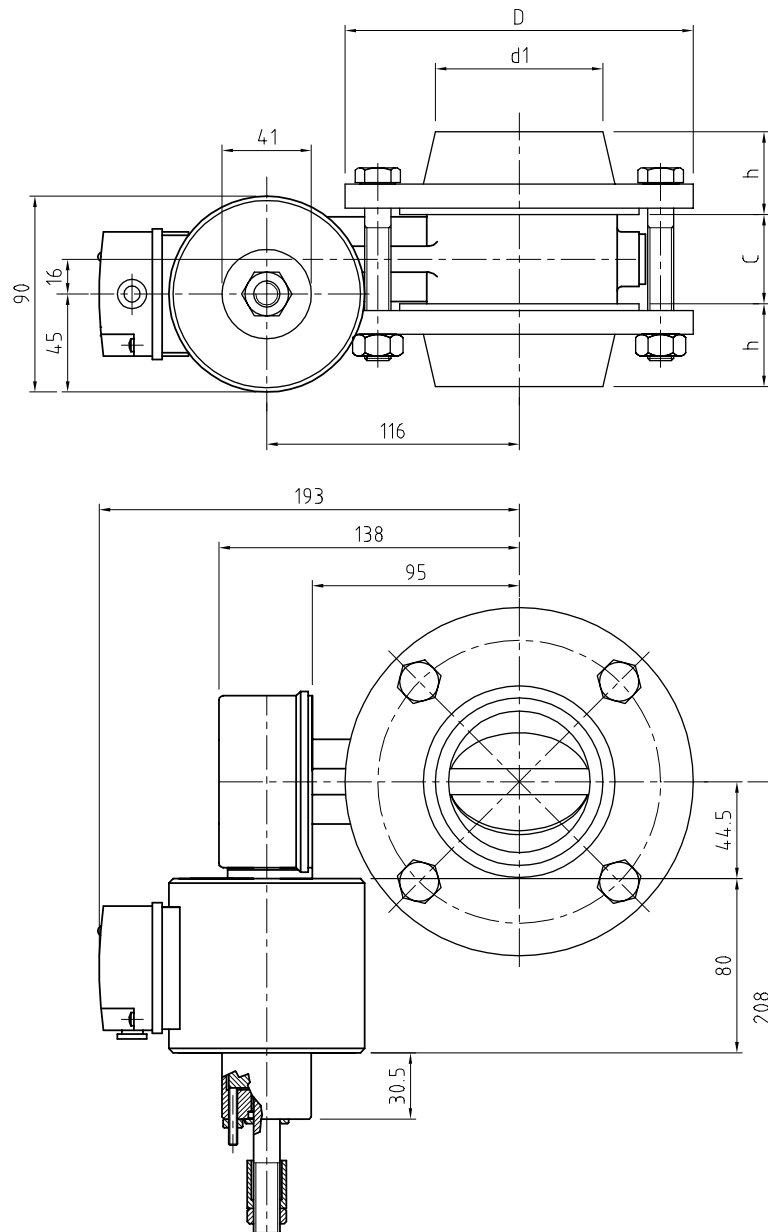
Headquarters
Esa S.r.l.
Via E. Fermi 40 I-24035 Curno (BG) - Italy
Tel. +39.035.6227411 - Fax +39.035.6227499
esa@esacombustion.it - www.esapyronics.com

International Sales
Pyronics International S.A./N.V.
Zoning Ind., 4ème rue B-6040 Jumet - Belgium
Tel +32.71.256970 - Fax +32.71.256979
marketing@pyronics.be

CAPACITY TABLE



DIMENSIONS



D1370001

Catalog No.	ø pipe	DN	PN	D mm	d ₁ mm	C mm	h mm
12 WBV-2S	1.1/2"	40	10	150	49	45	42
16 WBV-2S	2"	50	10	165	61	41	45
20 WBV-2S	2.1/2"	65	10	185	77	41	45

NOTE: Based on the company's policy aimed at a continuous improvement on product quality, ESA-PYRONICS reserves the right to bring changes to the technical characteristics of this device without previous notice. Our catalog updated to the latest version is available on our web site www.esapyronics.com and it is possible to download modified documents

WARNING: When operating, this combustion system can be dangerous and cause harm to persons or damage to equipment. Every burner must be provided with a protection device that monitors the combustion. The installation, adjustment and maintenance operations should only be performed by trained and qualified personnel.