

SLIDING BURNER WITH SILICON CARBIDE RAD-1 SERIES

FEATURES

- Burner body: AISI310
- Mixer body: AISI303
- Gas pipe: AISI304
- Nozzle: AISI303
- Flame shield: silicon carbide
- Suitable for different types of gas: CH₄/L.P./propane/etc.
- Capacity: 15 kW
- Air and gas pressure: 75 mbar
- Wide turndown range
- Low NO_x level
- Separated air and gas inlets, mixing at discharge point, no flash-back.

APPLICATIONS

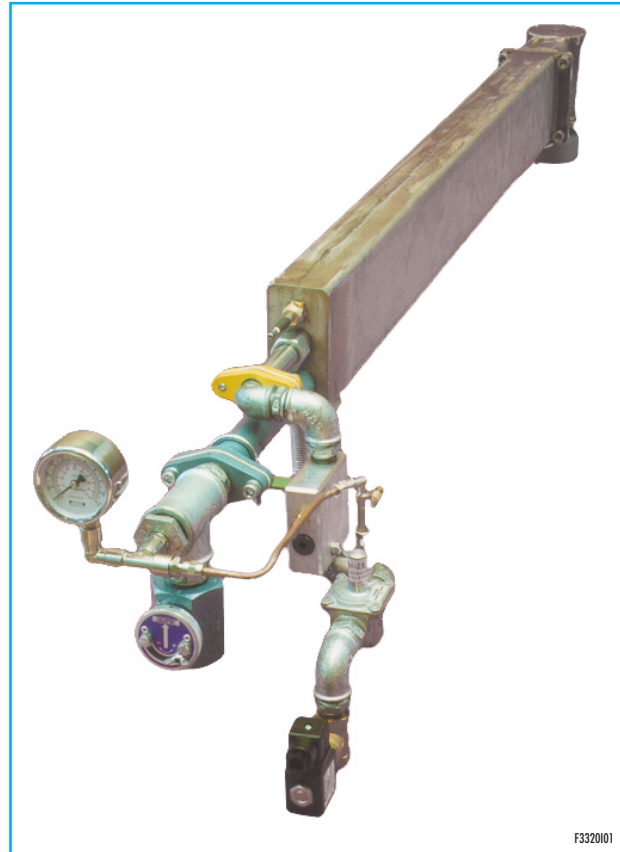
- Glass furnaces

DESCRIPTION

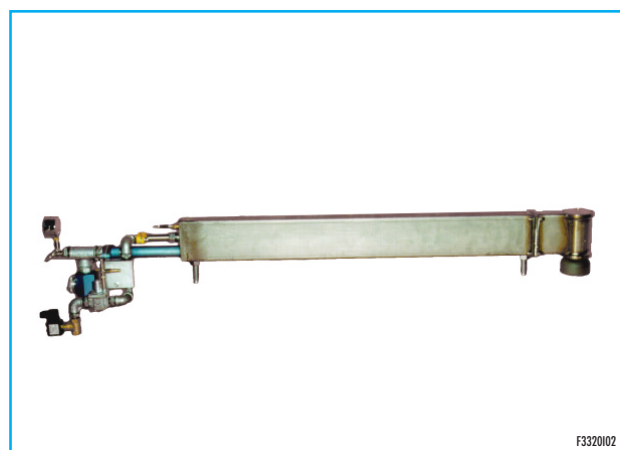
Naked flame burner model RAD-1 is suitable for bending glass furnaces. Mixer is mounted directly on nozzle in order to reduce to a minimum possible flashbacks.

INSTALLATION

RAD-1 burner must be mounted on wall, just under the roof in order to have a flame directed down. For connection of air and gas pipes to burner, we suggest to use flexible pipes that allow burner to slide on mounting seat.



F332001



F332002

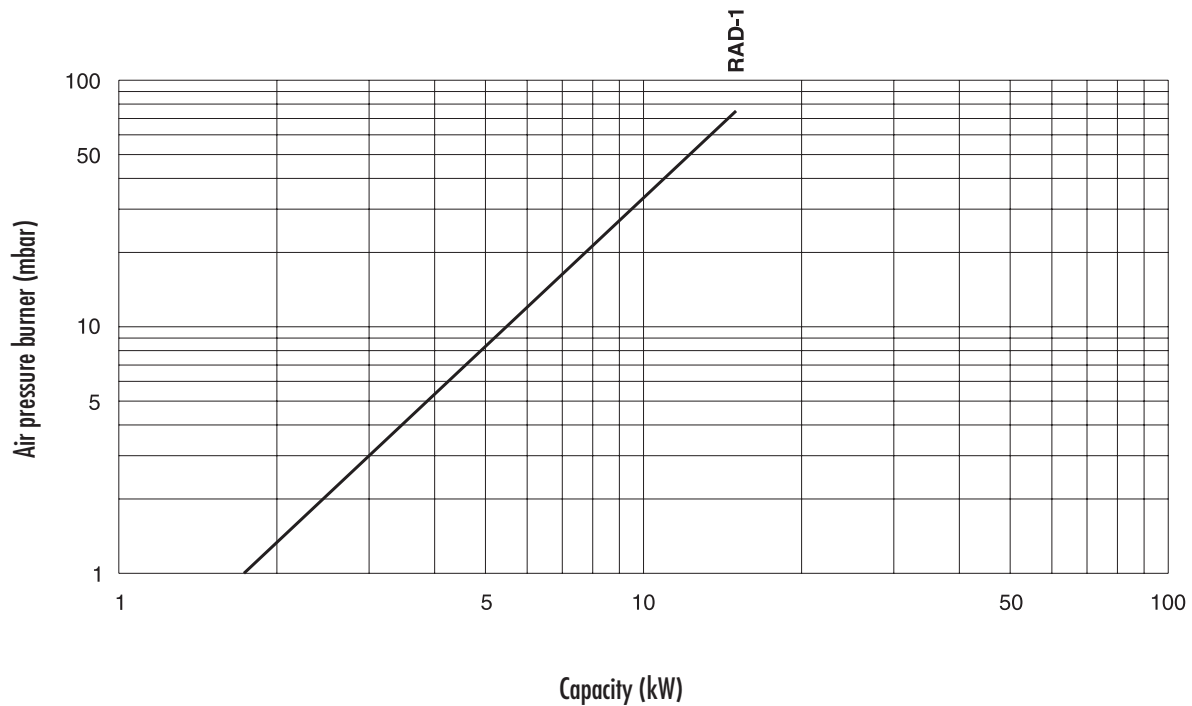
IGNITION AND FLAME DETECTION

RAD-1 must be ignited at low fire by a Wand electrode (supplied with the burner). Flame detection is made by the same electrode; we suggest installing a flame control device ESA ESTRO and a low impedance transformer (TAR-10).

Flame detection systems are required on all burners with furnace temperatures below 750°C.

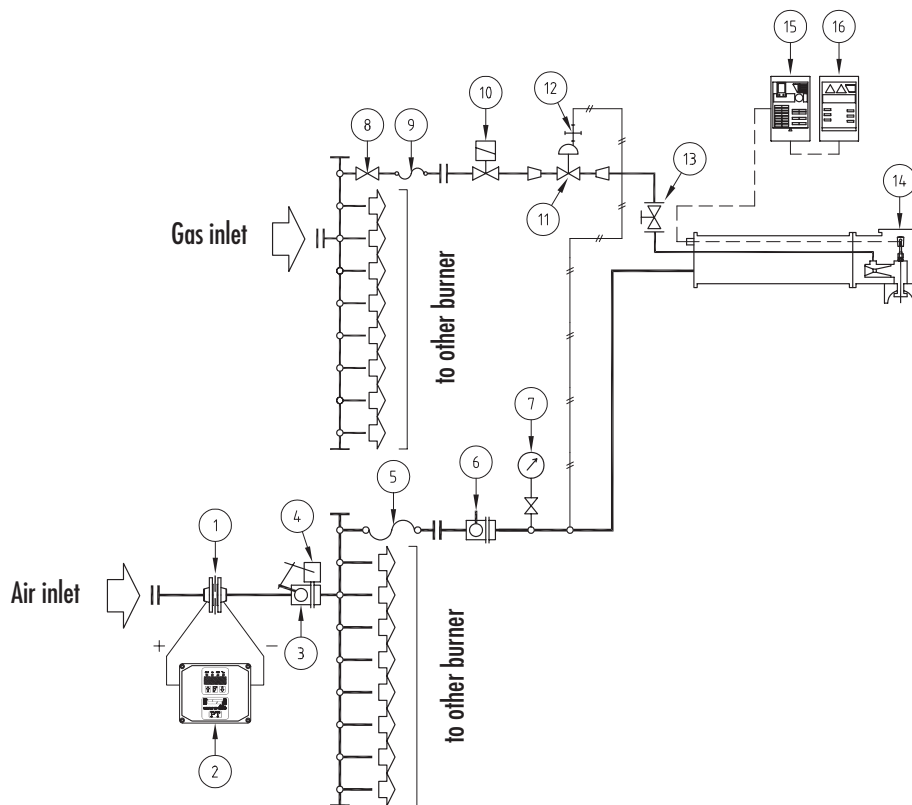
Catalog No.	Pilot burner ignition		Electrode ignition	
	Ignition	Detection	Ignition	Detection
RAD-1	(not available)	(not available)	Wand	Wand

CAPACITY TABLE



G3320/01

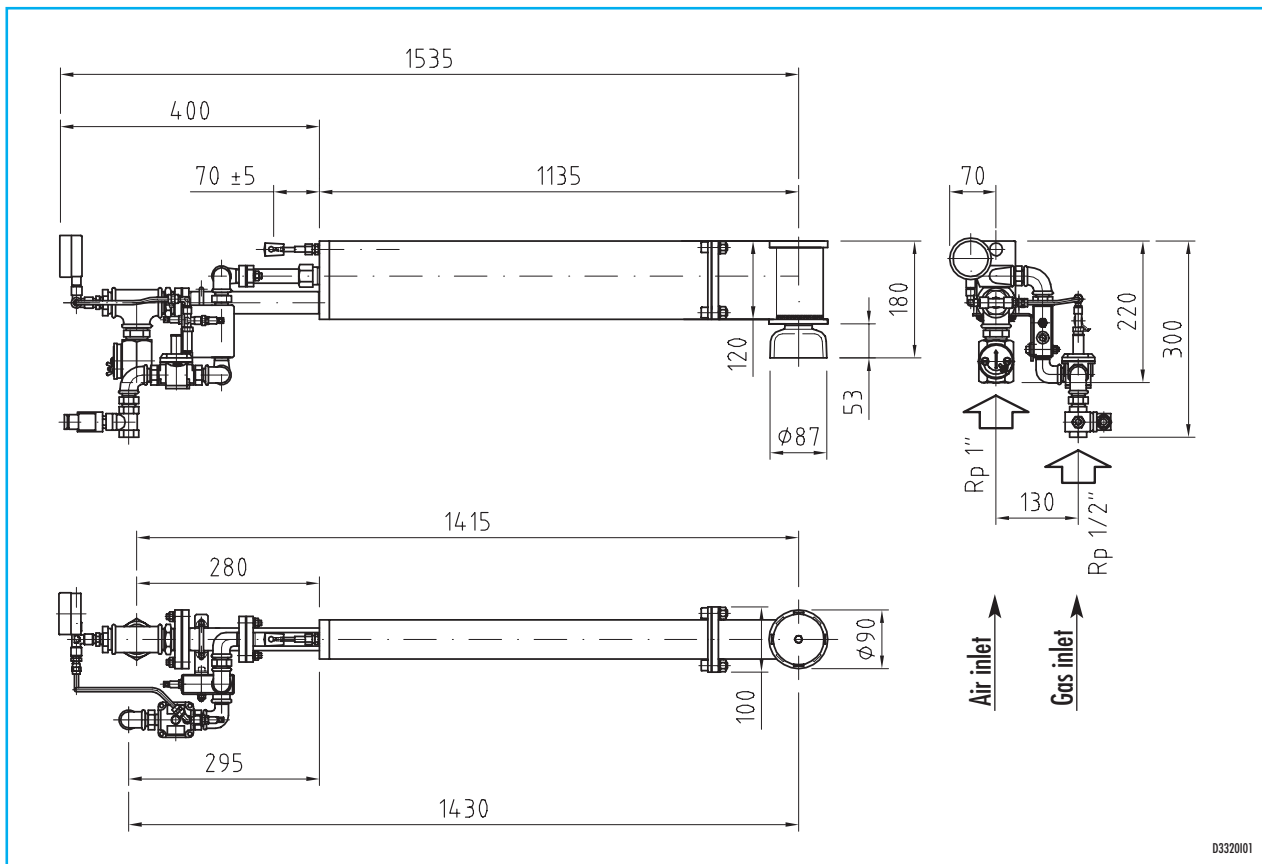
FLOW CHART



Pos.	Model Identification
1	Orifice flow meter for ΔP air
2	Differential pressure transmitter
3	Motorized air valve
4	Electric control
5	Flexible pipe
6	Manual butterfly air valve
7	Pressure gauge
8	Main gas ball valve
9	Flexible pipe
10	Burner safety solenoid gas valve
11	Zero regulator
12	Impulse line
13	Gas adjuster
14	Burner
15	Flame control device
16	Box with ignition transformer

D3320102

DIMENSIONS



NOTE: Based on the company's policy aimed at a continuous improvement on product quality, ESA-PYRONICS reserves the right to bring changes to the technical characteristics of this device without previous notice. Our catalog updated to the latest version is available on our web site www.esapyronics.com and it is possible to download modified documents

WARNING: When operating, this combustion system can be dangerous and cause harm to persons or damage to equipment. Every burner must be provided with a protection device that monitors the combustion. The installation, adjustment and maintenance operations should only be performed by trained and qualified personnel.